

OFFICE/WAREHOUSE/FLEX FOR SUBLEASE

14550 E. Easter, Unit #900, Centennial CO 80112



FEATURES

- Centennial Industrial Park
- Drive-In Loading
- Huge 14'x12' overhead door
- 16' clear height
- Warehouse ceiling is 12' from floor to the lights - 16' to joists
- 4 Offices/Reception/Storage/Kitchen/Open
- Showroom on ground floor

Lease Rate \$10.00/SF/YR NNN
Size: 2,825 USF on 2 levels
County: Arapahoe
Term: April 2025-July 31, 2027
Op Ex (2024): \$6.76/USF/YR/Month
Parking: 1.2/1000



SHELDON • GOLD REALTY INC.
commercial real estate services



Greg Johnson, President

Office: 303.741.2500 Cell 303.667.3061

7900 E. Union Ave., Suite 1100 Denver, CO 80237

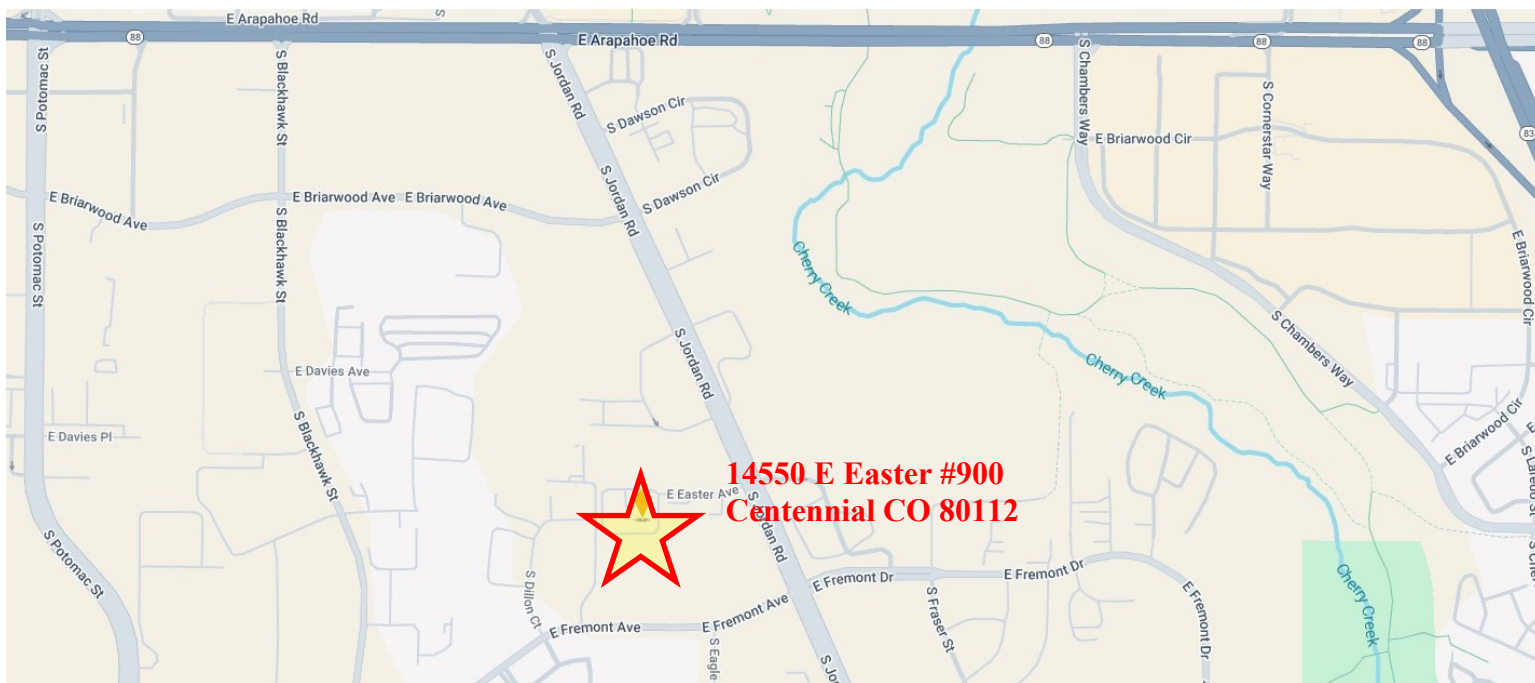
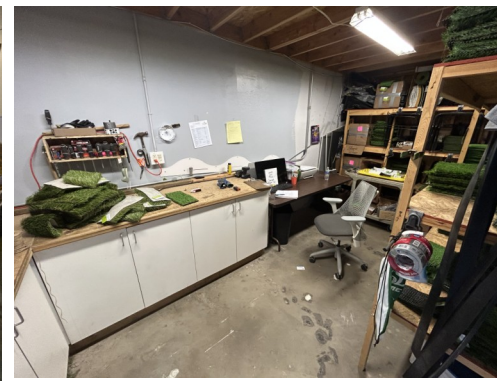
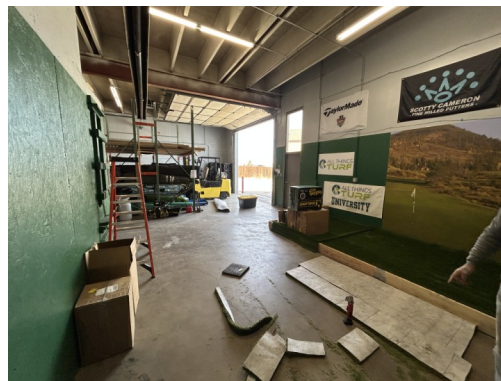
THE INFORMATION CONTAINED HEREIN, WHILE NOT GUARANTEED, IS FROM SOURCES WE BELIEVE RELIABLE. PRICE, TERMS AND INFORMATION ARE SUBJECT TO CHANGE. SHELDON•GOLD REALTY INC. AND ITS BROKER ASSOCIATES, ARE OR WILL BE ACTING AS AGENTS OF THE SELLER/LESSOR WITH THE DUTY TO REPRESENT THE INTERESTS OF THE SELLER/LESSOR. SHELDON•GOLD REALTY INC. WILL NOT ACT AS YOUR AGENT UNLESS AN AGENCY AGREEMENT IS SIGNED AND IN EFFECT.

CENTENNIAL IND. PARK OFC/WAREHOUSE/FLEX

Centennial Industrial Park

OFFICE/WAREHOUSE/FLEX FOR SUBLEASE

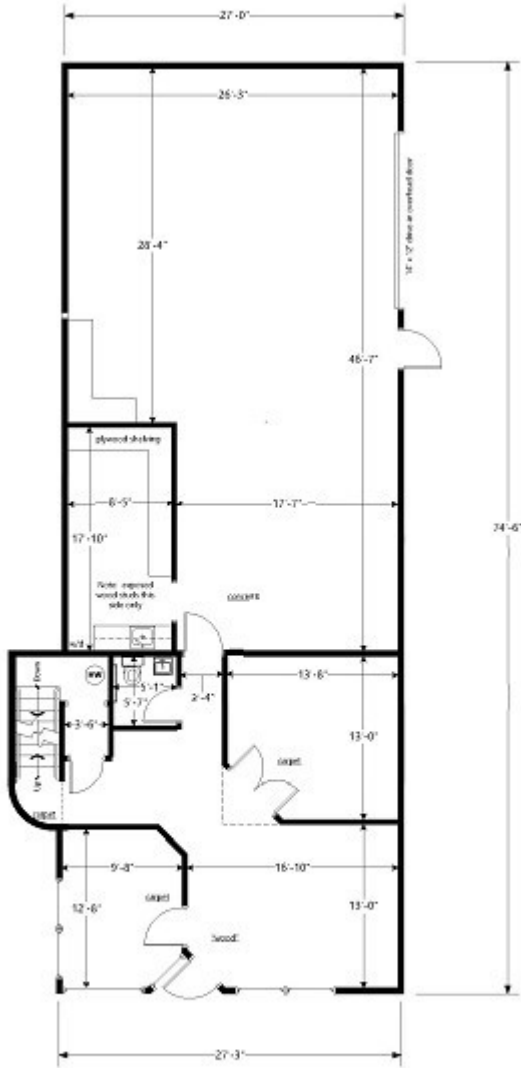
144550 E. Easter, Centennial CO 80112



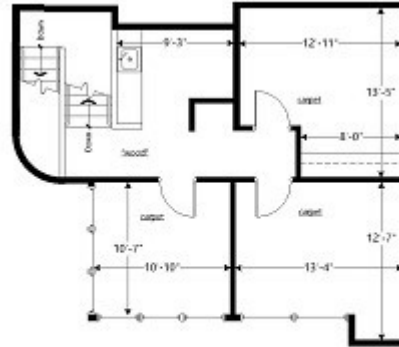
Centennial Industrial Park

OFFICE/WAREHOUSE/FLEX FOR SUBLEASE

144550 E. Easter, Centennial CO 80112



MAIN LEVEL - UNIT 900



SECOND LEVEL - UNIT 900