

FOUNTAINHEAD PLAZA OFFICE SPACE FOR LEASE

10630 E. Bethany Dr., Aurora CO 80014



Available: 4,281/RSF
Lease Rate: \$12.95/RSF Full Service
Age: 1981
Parking: Abundant free surface



Features:

- Attractive, two-story office space
- High-class finishes throughout
- Working fireplace
- Kitchen
- Shared restrooms and shower
- 2 private exterior entrances
- Convenient location near I-225 and Parker Rd.
- Furniture negotiable
- Stable, cooperative Landlord



SHELDON • GOLD REALTY INC.
commercial real estate services

Julie Scott, Executive Administrator

Eric Gold, President

Office: 303.741.2500

9025 East Kenyon Avenue, Suite 100 Denver, CO 80237

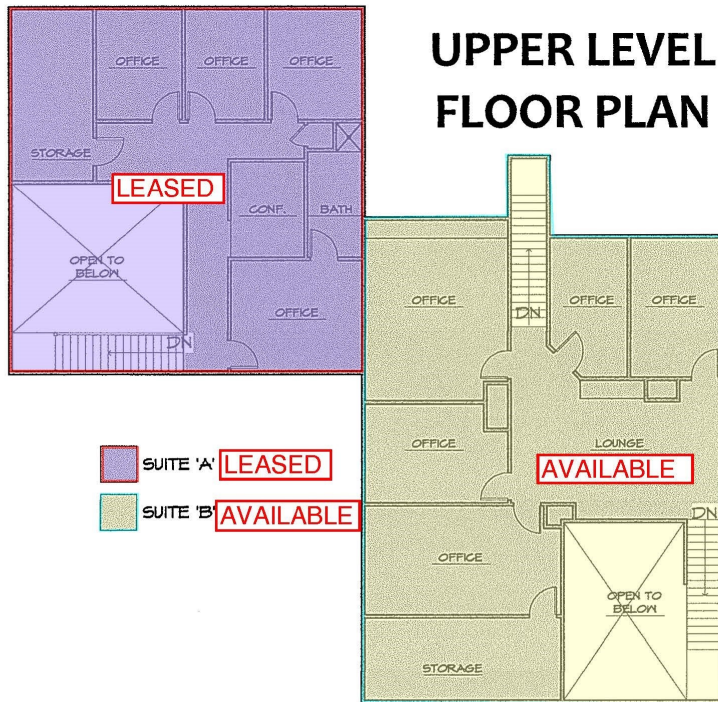
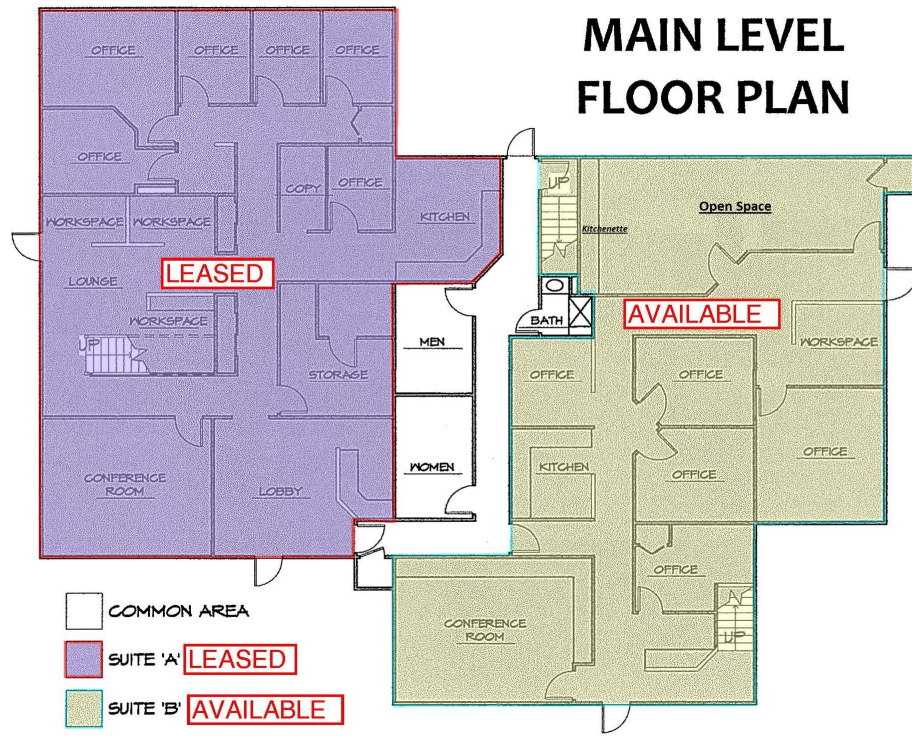
jscott@sg-realty.com / egold@sg-realty.com www.sg-realty.com

THE INFORMATION CONTAINED HEREIN, WHILE NOT GUARANTEED, IS FROM SOURCES WE BELIEVE RELIABLE. PRICE, TERMS AND INFORMATION ARE SUBJECT TO CHANGE. SHELDON-GOLD REALTY INC. AND ITS BROKER ASSOCIATES, ARE OR WILL BE ACTING AS AGENTS OF THE SELLER/LESSOR WITH THE DUTY TO REPRESENT THE INTERESTS OF THE SELLER/LESSOR. SHELDON-GOLD REALTY INC. WILL NOT ACT AS YOUR AGENT UNLESS AN AGENCY AGREEMENT IS SIGNED AND IN EFFECT.

OFFICE SPACE FOR LEASE



Floor Plans Combined - Glass on all Four Sides



SUITE 'B'	MAIN LEVEL	2345 SF
SUITE 'B'	UPPER LEVEL	1675 SF
		4020 SF

COMMON AREA	MAIN LEVEL	501 SF
		501 SF

TENANT SPACE
 10630 E. BETHANY DRIVE
 AURORA, CO 80014-2651

10630 E. Bethany Dr., Aurora CO 80014

