

# FOUNTAINHEAD PLAZA OFFICE SPACE FOR LEASE

## 10630 E. Bethany Dr., Aurora CO 80014



Available: 4,281/RSF  
Lease Rate: \$14.95/RSF Full Service  
Age: 1981  
Parking: Abundant free surface



### **Features:**

- Attractive, two-story office space
- High-class finishes throughout
- Working fireplace
- Kitchen
- Shared restrooms and shower
- 2 private exterior entrances
- Convenient location near I-225 and Parker Rd.
- Furniture negotiable
- Stable, cooperative Landlord.



**Greg Johnson, Senior Advisor**

**Office: 303.741.2500 Cell 303.667.3061**

9025 East Kenyon Avenue, Suite 100 Denver, CO 80237

[gjohnson@sg-realty.com](mailto:gjohnson@sg-realty.com) [www.sg-realty.com](http://www.sg-realty.com)

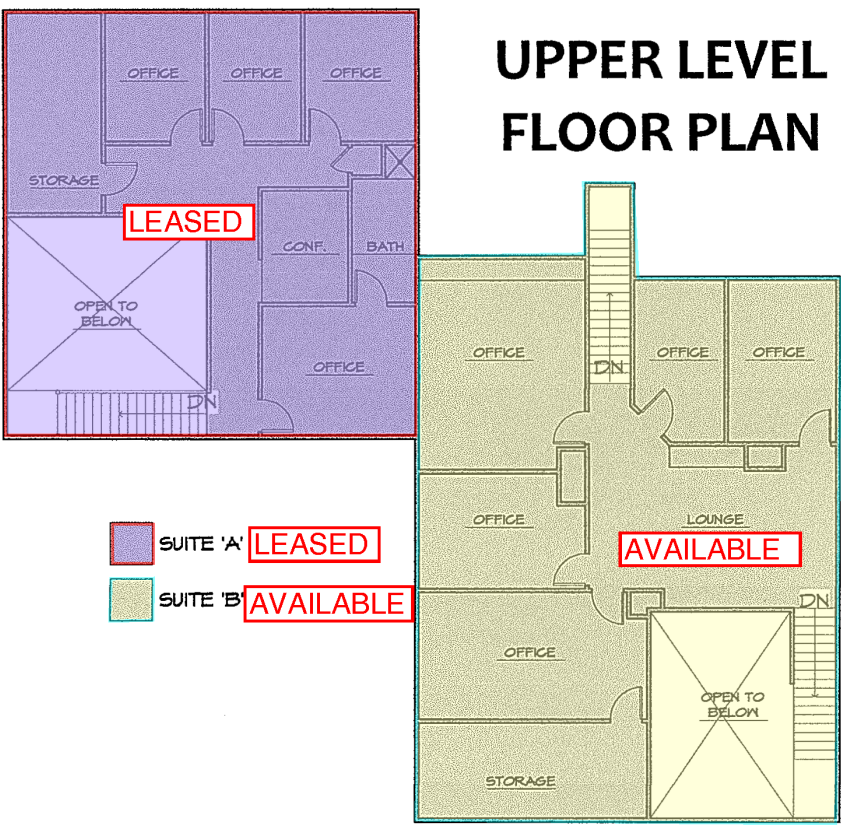
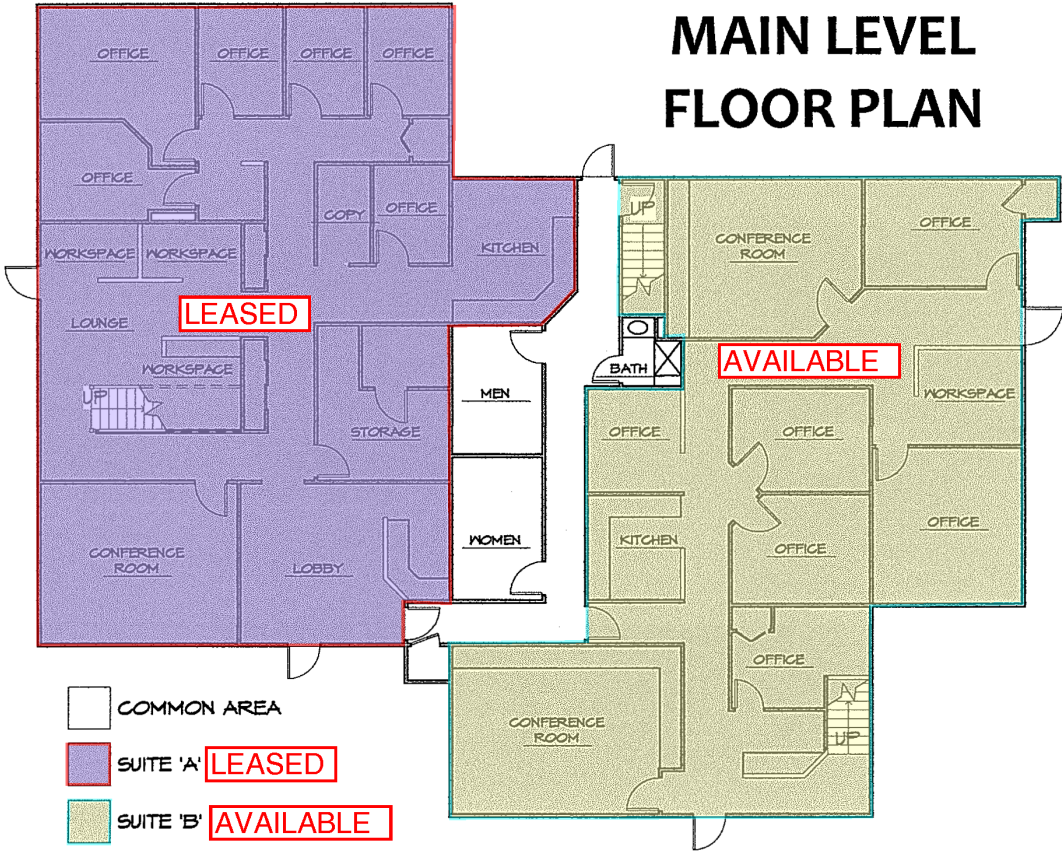
THE INFORMATION CONTAINED HEREIN, WHILE NOT GUARANTEED, IS FROM SOURCES WE BELIEVE RELIABLE. PRICE, TERMS AND INFORMATION ARE SUBJECT TO CHANGE. SHELDON-GOLD REALTY INC. AND ITS BROKER ASSOCIATES, ARE OR WILL BE ACTING AS AGENTS OF THE SELLER/LESSOR WITH THE DUTY TO REPRESENT THE INTERESTS OF THE SELLER/LESSOR. SHELDON-GOLD REALTY INC. WILL NOT ACT AS YOUR AGENT UNLESS AN AGENCY AGREEMENT IS SIGNED AND IN EFFECT.

OFFICE SPACE FOR LEASE





**Floor Plans Combined - Glass on all Four Sides**



SUITE 'B'	MAIN LEVEL	2345 SF
SUITE 'B'	UPPER LEVEL	1675 SF
		4020 SF

COMMON AREA	MAIN LEVEL	501 SF
		501 SF

**TENANT SPACE**  
 10630 E. BETHANY DRIVE  
 AURORA, CO 80014-2651