

**OFFICE SPACE
FOR SUBLEASE**

**12100 E. Iliff Ave., Suite 102
Aurora CO 80014**

OFFICE SPACE FOR SUBLEASE



Size: 5,955/RSF
Rate: \$17.00/RSF/Year
Term: To February 28, 2019
County: Arapahoe
Age: 1983
Parking: 3.5/1000RSF

- Building amenities include outdoor courtyards, upgraded lobbies, on-site security, impeccable landscaping, pedestrian/bike path, and great western views.
- The property is in close proximity to retail, restaurants and hotels.
- The tenants also benefit from an on-site deli.



Eric J. Gold, President 303.741.2500

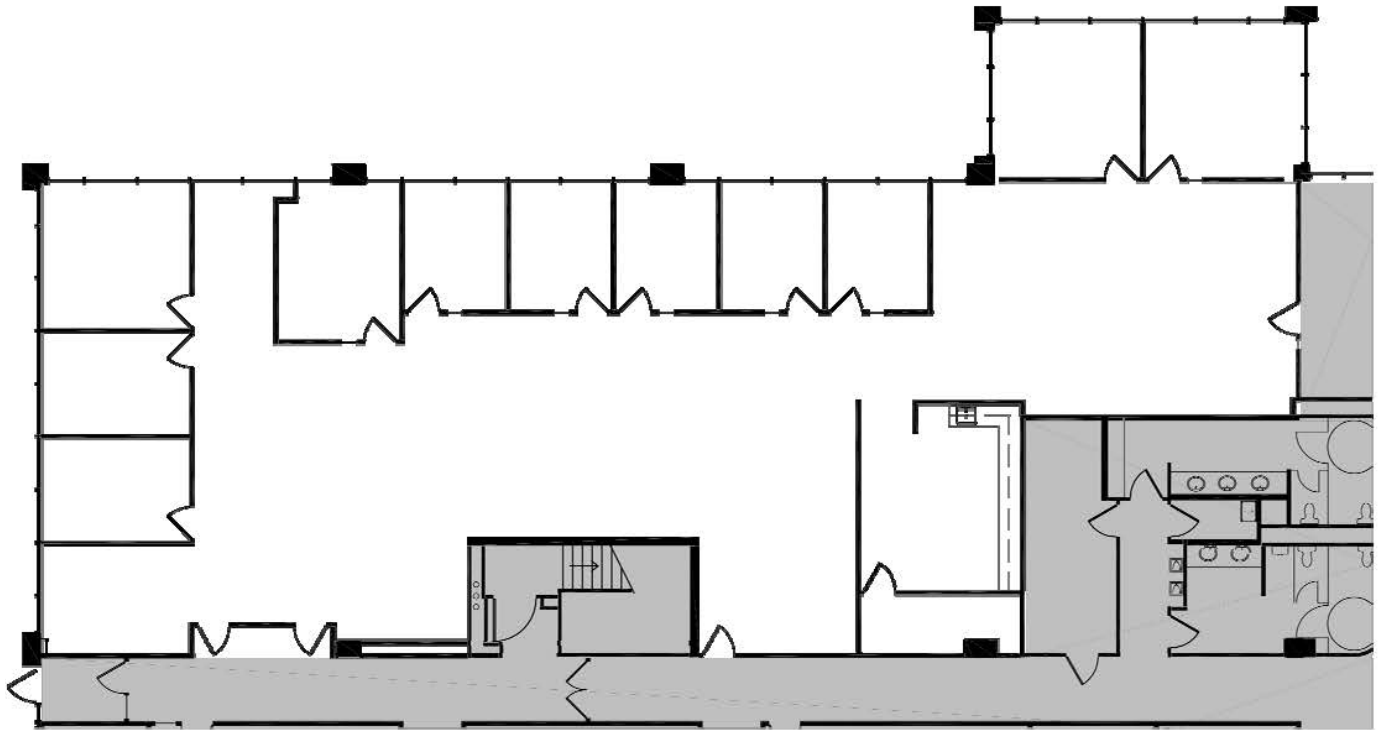
9025 East Kenyon Avenue, Suite 100 Denver, CO 80237

SHELDON • GOLD REALTY INC. egold@sg-realty.com
commercial real estate services www.sg-realty.com



THE INFORMATION CONTAINED HEREIN, WHILE NOT GUARANTEED, IS FROM SOURCES WE BELIEVE RELIABLE. PRICE, TERMS AND INFORMATION ARE SUBJECT TO CHANGE. SHELDON-GOLD REALTY INC. AND ITS BROKER ASSOCIATES, ARE OR WILL BE ACTING AS AGENTS OF THE SELLER/LESSOR WITH THE DUTY TO REPRESENT THE INTERESTS OF THE SELLER/LESSOR. SHELDON-GOLD REALTY INC. WILL NOT ACT AS YOUR AGENT UNLESS AN AGENCY AGREEMENT IS SIGNED AND IN EFFECT.

5,955 RSF



SUITE 102 -

NOT TO SCALE

