

OFFICE SPACE FOR LEASE

2020 S. Oneida St.
Denver CO 80224

COMMERCIAL OFFICE FOR LEASE



BUILDING SPECIFICATIONS

- Size: 16,370 RSF
- Available Suites: Ste 100—3,630 RSF (Entire Main Floor) 12 Privates, Conference Room, Reception/Open area. Suite is furnished if desired by tenant.
- Ste 205—1,370 RSF One large office, reception/waiting, open bull pen or classroom, double sink & full shower in premises.
- Lease Rate: \$14.00/RSF Modified Gross (As-Is) Starting Rate
\$0.50/SF Annual Increases
- Additional Rent: \$1.28/SF Utility Charge
- Furniture: Can be included
- Surface Parking: 3.7 Spaces/1,000 RSF
- County: Arapahoe (Unincorporated)
- Zoning: B1— Office & Service Retail (Arapahoe County)
- Year Built: 1974

FEATURES

- Updated common areas & bathrooms;
- Pride of Ownership, Well Maintained;
- Quiet Neighborhood;
- Generous, Free Parking;
- Signage available on building exterior.



SHELDON • GOLD REALTY INC.
commercial real estate services

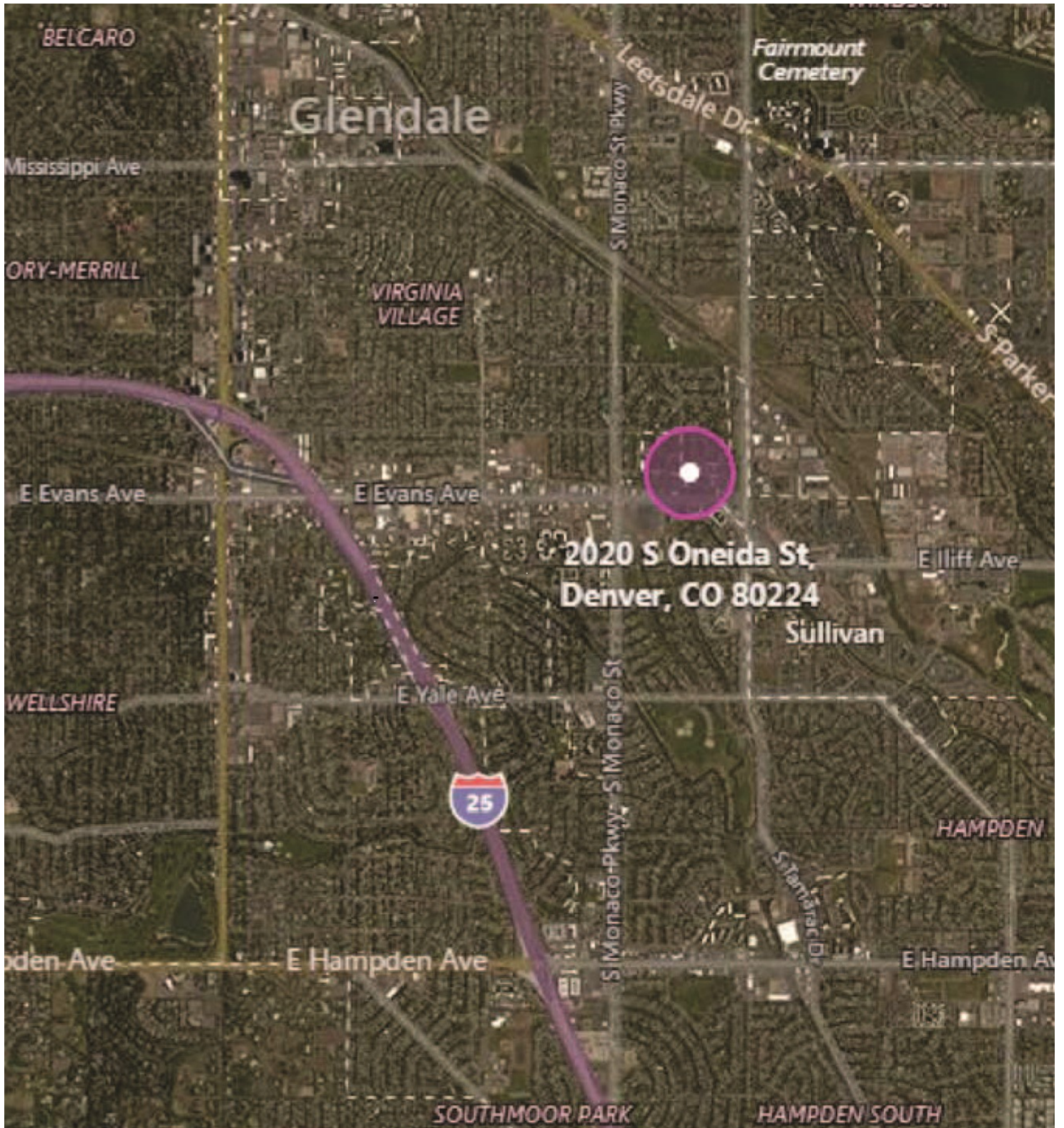


Mary Jo Cummings
720.220.6000
mcummings@sg-realty.com

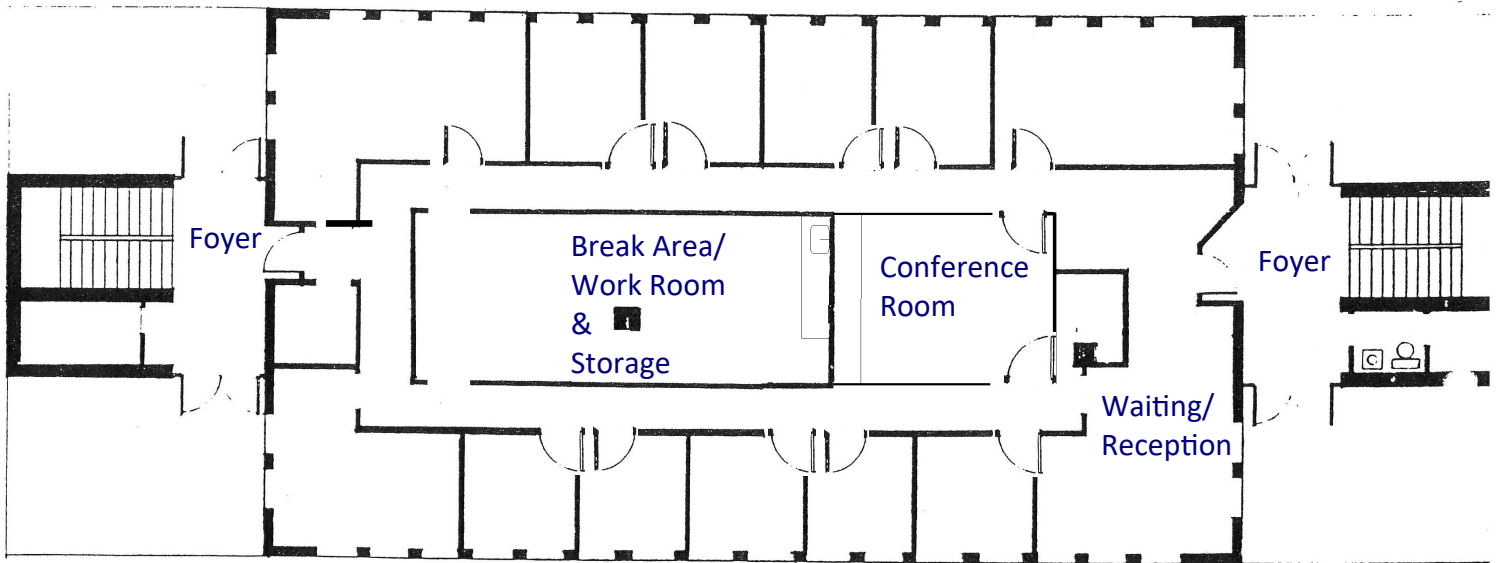
9025 East Kenyon Avenue, Suite 100 Denver, CO 80237, www.sg-realty.com 303.741.2500

THE INFORMATION CONTAINED HEREIN, WHILE NOT GUARANTEED, IS FROM SOURCES WE BELIEVE RELIABLE. PRICE, TERMS AND INFORMATION ARE SUBJECT TO CHANGE. SHELDON-GOLD REALTY INC. AND ITS BROKER ASSOCIATES, ARE OR WILL BE ACTING AS AGENTS OF THE SELLER/LESSOR WITH THE DUTY TO REPRESENT THE INTERESTS OF THE SELLER/LESSOR. SHELDON-GOLD REALTY INC. WILL NOT ACT AS YOUR AGENT UNLESS AN AGENCY AGREEMENT IS SIGNED AND IN EFFECT.

2020 S. Oneida St
OFFICE SPACE FOR LEASE
Denver CO 80224

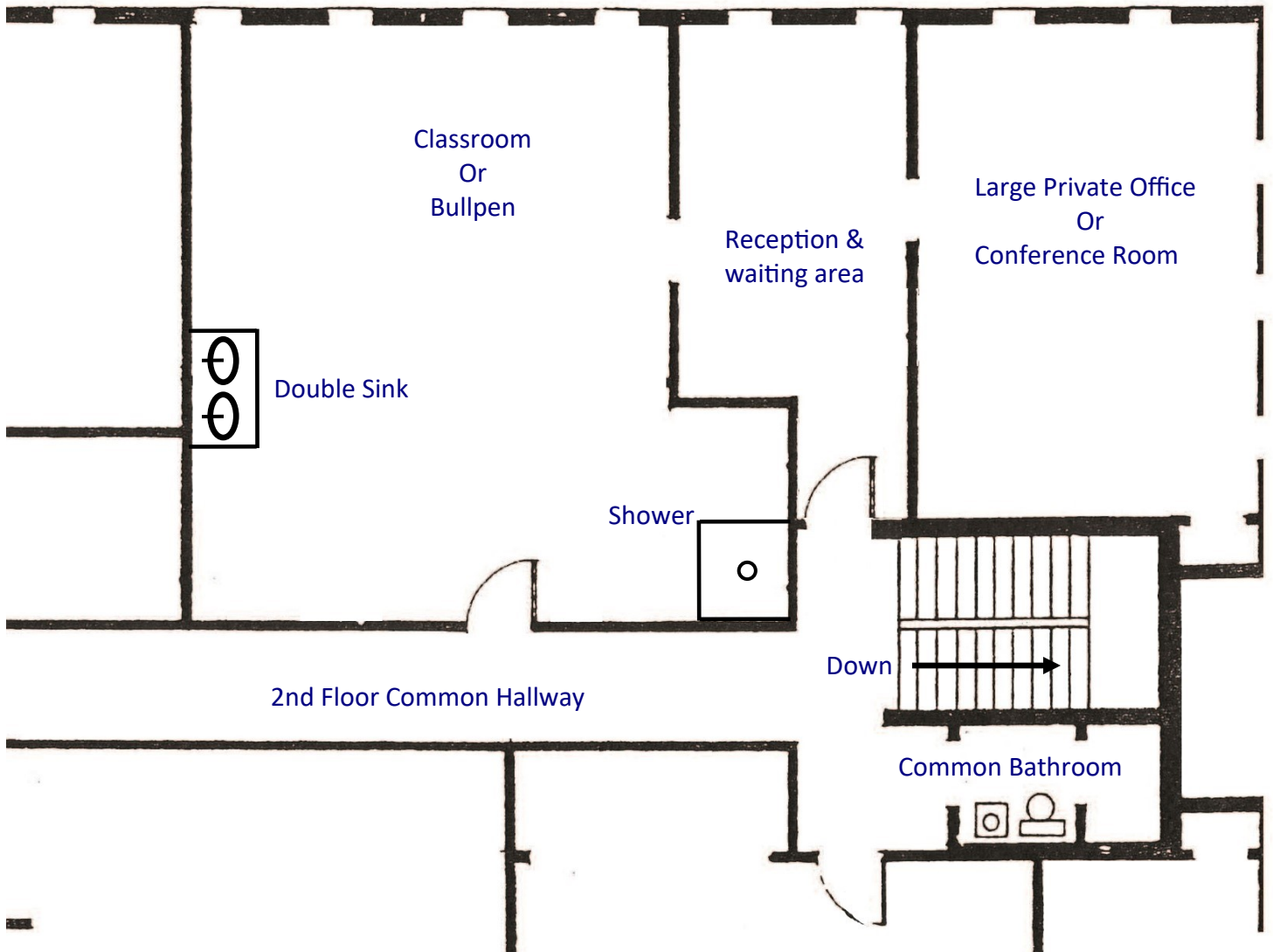


2020 S. Oneida St
OFFICE SPACE FOR LEASE
Denver CO 80224



Suite 100
3,630 SF
12 Privates, Conf. Room, Break/Storage, Waiting/Reception

2020 S. Oneida St
OFFICE SPACE FOR LEASE
Denver CO 80224



Suite 205
1,370 SF

1 Large, Private Office; Waiting/Reception; Bullpen or class room;
Double sink & full shower in premises.